

Stroke keyboard models

SR-S500S-SR
1-sheet model



SR-S500M-SR
1-sheet model



SR-S4000M-SR
2-sheet model



Combination keyboard models

SR-C550M-BK
1-sheet model



SR-C4500M-BK
2-sheet model



CASIO®

CONNECTED ECR

SR-S500/S4000
SR-C550/C4500

Smart & Simple

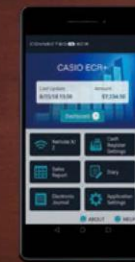
Specifications

Model No.	SR-S500S-SR	SR-S500M-SR	SR-S4000M-SR	SR-C550M-BK	SR-C4500M-BK
Body color	Silver			Black	
Keyboard type	Stroke			Combination	
Display	Operator LCD with backlight 26 digits, 10 line, Tilt mechanism				
	Customer LCD 2 line, Character display support, Pop-up, Rotating mechanism				
Printer	No. of sheets	1	2	1	2
	Printing method	Thermal printer			
	Printing Speed	20 lines/sec. (max.)			
	Printing width	58 mm +0/-1 mm × 80φ			
No. of PLUs	3,000		7,000	3,000	
Drawer type S: Small / M: Medium	Small		Medium		
Communication	Bluetooth® Ver4.1 (Low Energy compatible)				
Memory backup	2 x AA-size alkaline batteries / Data storage period: 1 year (at 25°C) / Battery life: Replace every year				
No. of RS232C ports	2				
Power source	100V~240V				
Power consumption	AC 230V~240V 0.33A / 120V~ 0.5A				
Operating temperature	0 to 40°C (32 to 104°F)				
Operating humidity	10~90% RH				
Dimensions and weight (W x D x H)	330 × 360 × 205 mm (13.0" × 14.1" × 8.0) with S-drawer		400 × 450 × 220 mm (15.7" × 17.7" × 8.6) with M-drawer		

There may be cases where application cannot be used depending on the type of devices and communication environment.
Android: Ver6.0 or above / iOS: Ver10.0 or above

Note: Other company and product names are generally registered trademarks or trademarks of the respective companies.
Bluetooth is a registered trademark of Bluetooth SIG, Inc., USA. A licence has been obtained for Casio cash registers.
Smartphone app screen subject to updates.
Screenshots are simulated.
Specifications in the table above are current as of August 2018 and are subject to change.

CASIO COMPUTER CO., LTD.
Tokyo, Japan



Bluetooth®



Small Drawer Not Available In UK

www.shopstuff.co.uk

Connects to smartphones via Bluetooth®. Simple functionality makes a big difference to your business.

This next-generation cash register connects to smartphones via Bluetooth®. The CASIO ECR+ smartphone app offers a range of features including register configuration and the ability to check sales figures. It's an information terminal that transcends conventional cash registers to simplify operation and help your business grow.



Small Drawer Not Available In UK

Make your Data work for you with the Smartphone App

Displays store sales in graphical format so you can see any store's performance at a glance.



View weekly, monthly and annual graphs of store sales to more effectively analyse and predict sales performance.

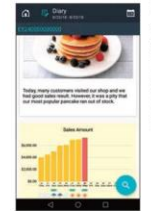
* You can view data going back up to 25 months. Data beyond that period is not viewable.

Run your store in a smarter way! Use your smartphone to easily set up products and change prices on the cash register.



Streamline the time-consuming task of managing cash register settings and data. Print promotional campaign information on receipts to attract more customers and increase business.

Easily create helpful log entries. You can store not only text but photos and sales graphs as well.



Record daily store activity that you can check at a glance. Reviewing log entries can provide hints to help resolve issues.

* Cloud-based example screen subject to updates.



Full Suite of Basic Features for a User-Friendly Experience



Adjustable display unit with 10-line LCD

The high-definition blue display makes data input easy to check. Inputting and checking a bill is smoother with improved visibility and ease of use.



High-speed printer

Fast printer with 20 lines/sec. output reduces customer waiting time during busy periods.



Pop-up display for customers

The customer display is an easy-to-see blue backlight. Helps prevent cashier errors to instill greater trust in your store.



A simple design to match a variety of stores



Back up register data to an SD card

Use an SD card to back up data stored on the register. You can also configure cash registers and manage sales with PC tools.



Steel drawer that is durable and aesthetically pleasing

The high-quality steel outer casing of the drawer is very robust. You can have confidence that this register will last a long time.

Watch the promotional movie to see why a Bluetooth®-equipped register makes such a difference!

